

# Doc M Sensorflow 21 Wall Hung Pack LH

## ILLUSTRATED

**S6986** Doc M contour 21 and Sensorflow 21 wall mounted left hand pack, sensor tap and TMV3 thermostatic valve, rimless WC pan and support brackets, Conceala water saving delay fill 4.5litre Sensorflow cistern, hinged support rail and toilet roll holder

## ILLUSTRATED PRODUCT DETAILS

### Weights

**S6986** 69.65 KG

### Finishes

**S6986**  Chrome (AA)

### Materials

**S6986** Mixed Material

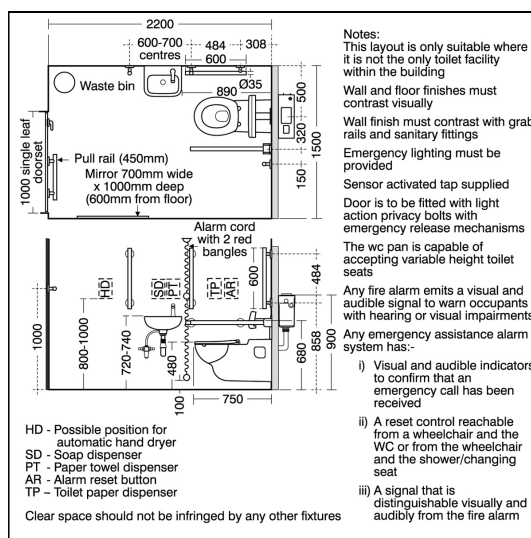
### Standards

Vitreous china to BS 3402

### Special Notes

Doc M packs are available both right and left hand corner arrangement, illustrated is left hand arrangement. Supplied with layout drawings, detailing the fixing positions necessary for Doc M compliance.

Mains powered Sensorflow products must be connected to a continuous permanent power supply of these require 220-240 volts and each 1 having its own fuse spur.



## ACCREDITATIONS



## FEATURES

