

# Doc M Contour 21 Wall Hung Pack LH

## ILLUSTRATED

**S6972** Doc M Contour 21 wall mounted left hand corner pack, rimless WC pan and support brackets, water saving dual flush Conceala cistern, grab rails, luxury back support, hinged support rail with toilet roll holder, seat no cover with retaining buffers, copper tails on TMV3 mixer tap.

## ILLUSTRATED PRODUCT DETAILS

### Weights

**S6972** 69.65 KG

### Finishes

**S6972**  Chrome (AA)

### Materials

**S6972** Mixed Material

## FINISH OPTIONS

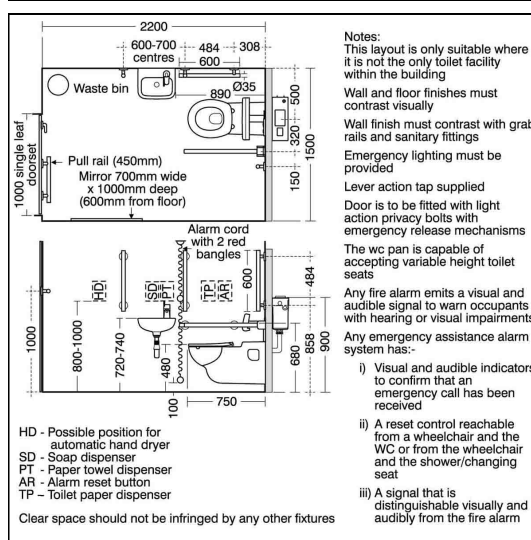


### Standards

Vitreous china to BS 3402

### Special Notes

Doc M packs are available both right and left hand corner arrangement, illustrated is left hand arrangement. Supplied with layout drawings, detailing the fixing positions necessary for Doc M compliance



## ACCREDITATIONS



## FEATURES

