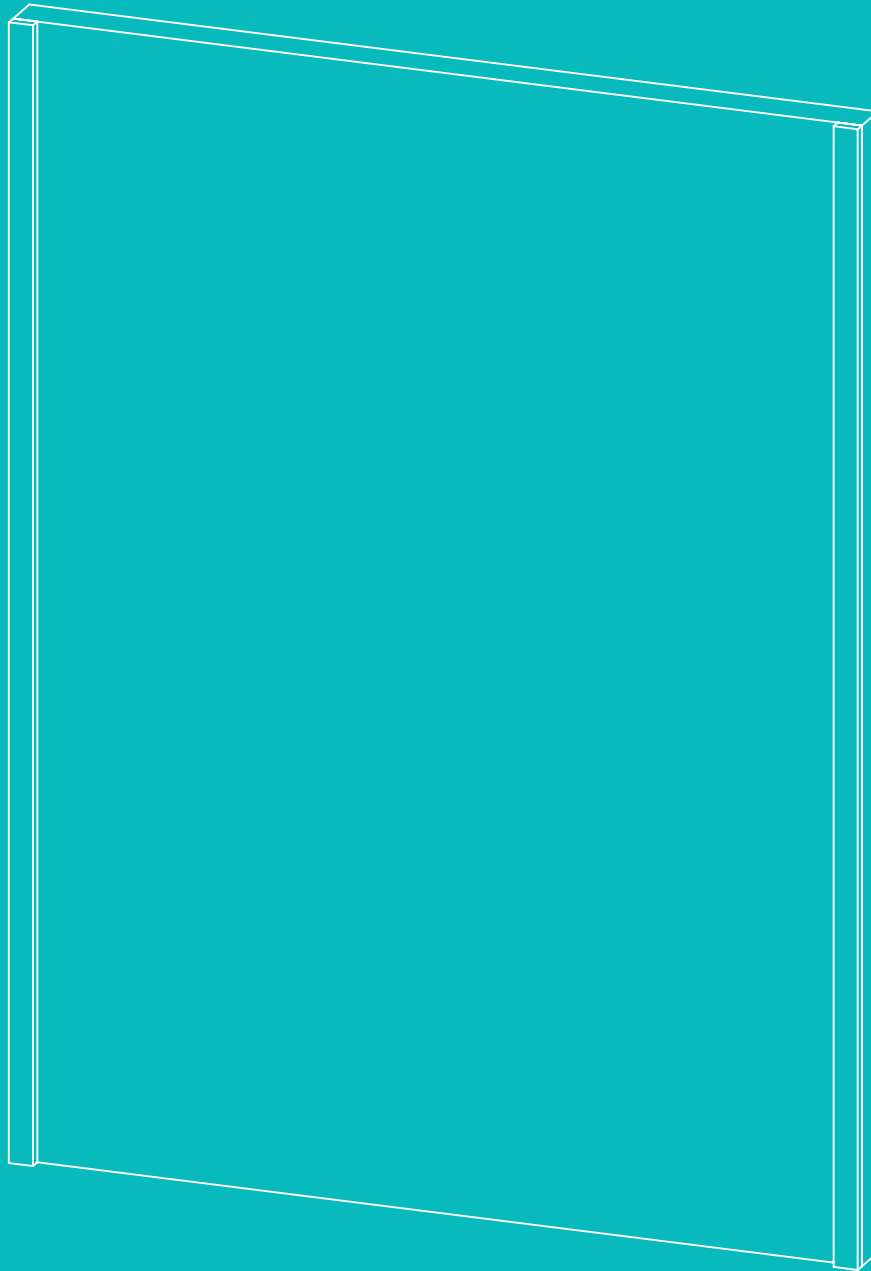


HiB

MAKING
BATHROOMS
BEAUTIFUL

**Technical Drawing &
FAQ Data Sheets**



Zircon 50

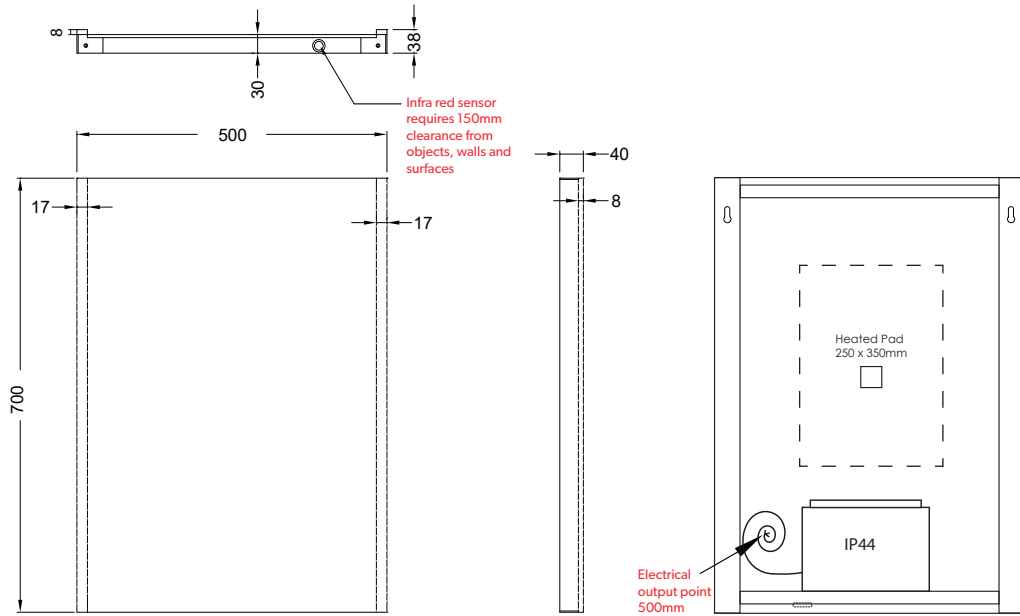
Zircon 60

Zircon 80

HiB recommend you receive the product before commencing with installation as all sizes and measurements are approximate. HiB try and ensure all measurements are as accurate as possible. In the interest of continuous product development, HiB reserves the right to alter specification as necessary. E & OE.

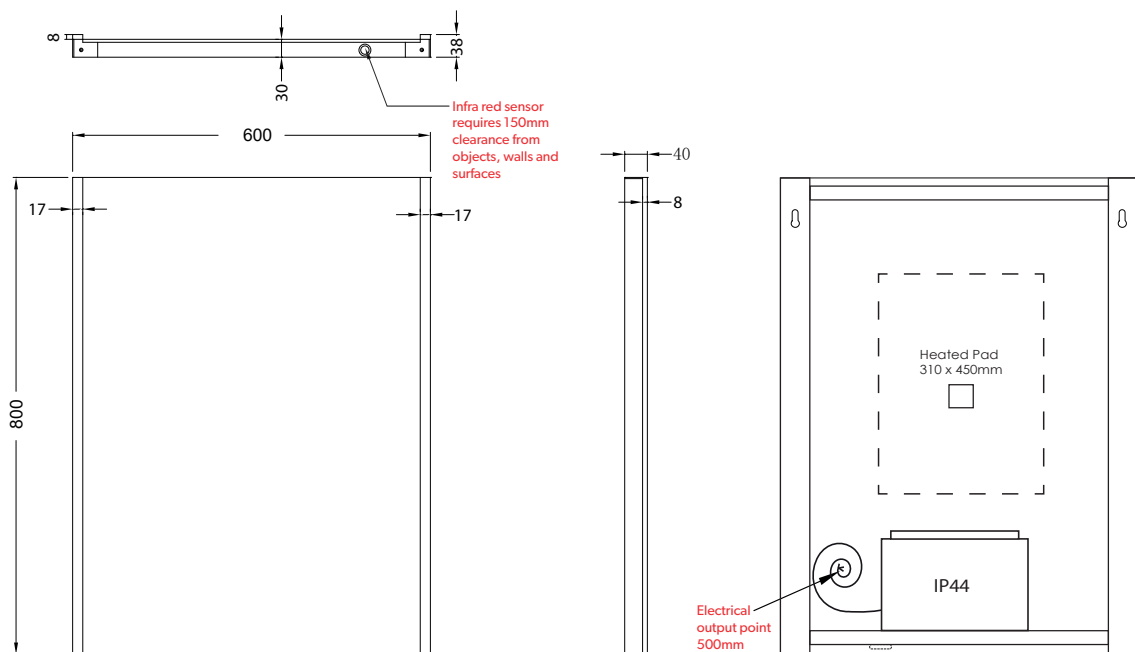
Zircon 50

Art no. 77600000



Zircon 60

Art no. 77610000



Electrical Safety Information

HiB recommends that all electrical bathroom products should only be fitted by a suitably qualified, Part P registered electrician in accordance with current IEE regulations.

Ensure mains power supply is switched off before starting installation.

Before drilling, ensure there are no hidden cables or pipes in the wall.

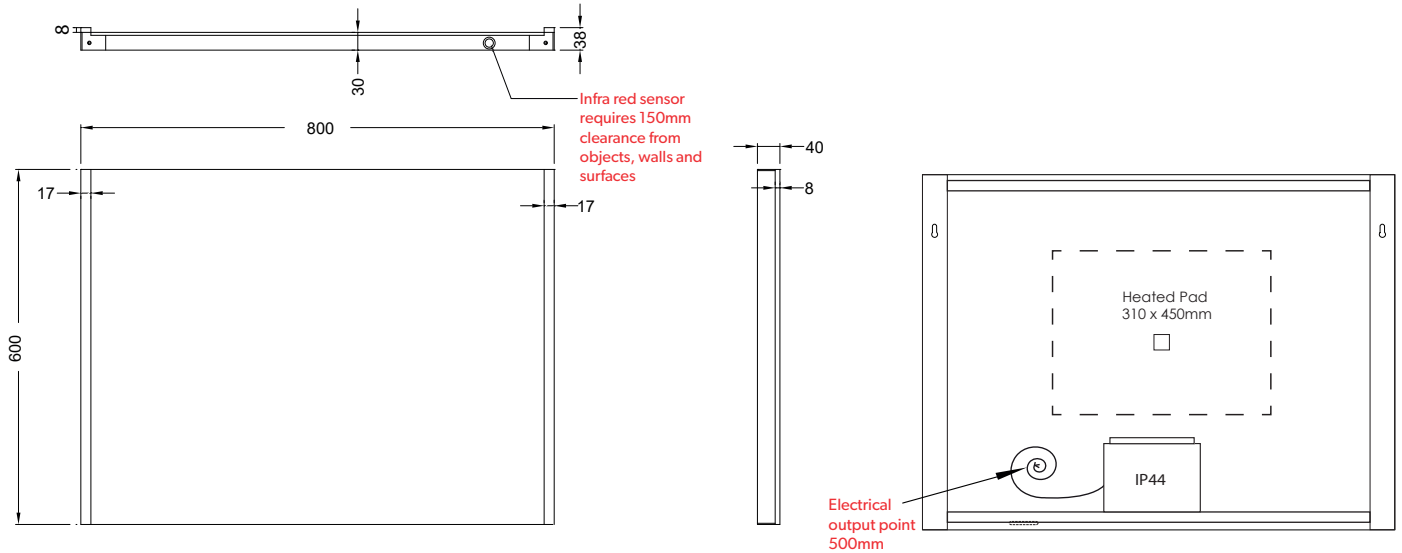
HiB recommend you receive the product before commencing with installation as all sizes and measurements are approximate.

HiB try and ensure all measurements are as accurate as possible.

In the interest of continuous product development, HiB reserves the right to alter specification as necessary. E & OE.

Zircon 80

Art no. 77620000



Electrical Safety Information


HiB recommends that all electrical bathroom products should only be fitted by a suitably qualified, Part P registered electrician in accordance with current IEE regulations.

Ensure mains power supply is switched off before starting installation.

Before drilling, ensure there are no hidden cables or pipes in the wall.

Zircon

50, 60 & 80

		Version No. 05.04.17
	Product	Zircon 50, Zircon 60 & Zircon 80
	Art. No.	Zircon 50: 77600000, Zircon 60: 77610000 & Zircon 80: 77620000
	Product Description	LED mirror with mirror profile, heated pad & sensor switch.

Question	Answer
Nett weight (kg)	Zircon 50: 6.4 kg / Zircon 60: 8.2 kg / Zircon 80: 8.1 kg
Light Source	LED
Light Source Average Lifespan	Average: 20,000 hr
Total Rated Wattage (W)	Zircon 50: 45.1w / Zircon 60: 46.5w / Zircon 80: 43.6w
Lumens (Lm)	Zircon 50: 840 lm / Zircon 60: 960 lm / Zircon 80: 720 lm
Kelvins (k)	Zircon 50: 6400k / Zircon 60: 6400k / Zircon 80: 6400k
Is the mirror dimmable?	No
Energy Rating	Class A
Is the heated pad only on when the mirror is illuminated?	Yes
Does the mirror require an earth connection?	Yes
Can I bypass the sensor so the mirror comes on with the main room light?	Yes
Is it cool white or warm white illumination?	Cool white
What IP rating is the mirror?	All Zircon mirrors are IP44 rated
How long is the warranty?	5 years from date of purchase on silvering coating on mirror 2 years from date of purchase on electrical components in the mirror

Electrical Safety Information

HiB recommends that all electrical bathroom products should only be fitted by a suitably qualified, Part P registered electrician in accordance with current IEE regulations.

Ensure mains power supply is switched off before starting installation.

Before drilling, ensure there are no hidden cables or pipes in the wall.

HiB recommend you receive the product before commencing with installation as all sizes and measurements are approximate.

HiB try and ensure all measurements are as accurate as possible.

In the interest of continuous product development, HiB reserves the right to alter specification as necessary. E & OE.

T: +44 (0)20 8441 0352 F: +44 (0)208441 0219 E: sales@hib.co.uk W: hib.co.uk

HiB Ltd. Building 3, North London Business Park, Oakleigh Road South, New Southgate, London. N11 1GN